

School scoliosis screening, a program useful not only for the prevention of scoliosis. Part two: a clinical research tool for the study of the aetiology of idiopathic scoliosis.

Theodoros B. Grivas

ABSTRACT

This report presents the contribution of the school scoliosis screening program on aetiology/scoliogeny of idiopathic scoliosis. A number of issues are discussed related to the analysis of collected data from scoliosis school screening, namely the study of the influence of environmental factors in IS prevalence, that is the geographical latitude, menarche and the role of melatonin in IS pathogenesis, the relevance of scoliosis in women with visual deficiency, the age at menarche and its relation to laterality of the curve, the role of the brain in truncal asymmetry and idiopathic scoliosis pathogenesis, the thoracic cage in normality and its role in IS pathogenesis. We present the introduction of segmental thoracic ratios method and of the segmental Rib Vertebra Angles and Rib Vertebra Angle Differences in thoracic radiographs. The relative narrowing of the chest during growth: a hypothesis involving pelvic and thoracic inertia in gait and the introduction of double rib contour sign and the Rib Index. The impact of the lateral (sagittal plane) spinal profile, the role of the intervertebral discs in IS pathogenesis and the association of cavus foot with IS are also discussed. Additionally, the analysis of the somatometric parameters, the study of surface topography and the role of leg length inequality are presented. A pathophysiologic concept possibly common with IS is postulated studying the BMI in relation to the asymmetrical healthy adolescents. The parental age at birth is presented as a possible epigenetic factor/mechanism for the truncal asymmetry of a child. Finally, we summarize the outcomes and the hypothesized concepts related to IS scoliogeny, resulting from our SSS program, and our related publications on all the above discussed topics.

KEYWORDS: school scoliosis screening, aetiology, idiopathic scoliosis, environment, IS prevalence, geographical latitude, menarche, melatonin, IS pathogenesis, visual deficiency, age at menarche, curve laterality, brain, truncal asymmetry, thoracic cage, segmental thoracic ratios, segmental rib vertebra angles, segmental rib vertebra angle differences, growth, thoracic inertia, gait, double rib contour sign, rib index, lateral spinal profile, sagittal plane, intervertebral disc, cavus foot, somatometric parameters, surface topography, leg length inequality, BMI, epigenetics, parental age, IS concepts.

CORRESPONDING
AUTHOR,
GUARANTOR

Theodoros B. Grivas, MD PhD, Orthopaedic Surgeon.
Former head of the Traumatology and Orthopaedic Department of "Tzaneio"
General Hospital of Piraeus, Piraeus, Greece.
Tel. +30-6944897585, Email: tgri69@otenet.gr; grivastb@gmail.com

“Mother nature created the spine articulated and mobile and we have to take any effort to keep it like this”

Introduction

The knowledge of normality is necessary for the study of abnormality. In this context the school scoliosis screening (SSS) programs serve the study both of these conditions, that is the study of normality and abnormality in children and adolescents during growth. Through the implementation of SSS programs data of growing school children and adolescents are collected and analyzed. Consequently, the axiom that the anatomy/morphology, may express/reflect and decipher/decode the physiology and pathology is used to clarify possible “paths” related to the understanding the scoliogeny.

At the beginning of our SSS program in 1997, we examined not only children of the ages according to the existing policies, that is approximately children from 9-14 years of age, when 85% of clinically significant IS appear [1,2], but we also screened pupils/students from 6 - 18 years old, namely from the first elementary grade [5-6 yrs. of age] to the last grade of high school [17-18yrs of age]). The beneficial result of this policy was that we had a great opportunity to collect data from a wide age range of the examined school children and adolescents.

The original main aim of the SSS programs is to identify most or all the individuals with unrecognized idiopathic scoliosis (IS) at an early stage when a less invasive treatment is more effective, in other words it is prevention. Beyond its original aim, SSS programs provide the opportunity for collection of various cross-sectional data, a) of normal children of general population [high, weight, menarche, handedness etc.] and b) similar data of asymmetric/scoliotic children and adolescents. These programs also enable the comparison of normals to asymmetric/scoliotics children and adolescents. Therefore, SSS programs are a “human evidence- based” “clinical research” tool of IS aetiology-scoliogeny based on the study of humans not animals, based on the above-mentioned axiom of the association of the anatomy/morphology to physiology/pathology.

The SSS offered information for the epidemiology and natural history of adolescent IS (AIS), [3,4].

Analysis of our domestic SSS programs, performed at the various cities of Greece, documented the national incidence of IS, and the estimation of the probable number of children who will need to be conservatively or surgically treated, [5,6].

During the years 1975 - 1999, 17 School Screening programs were performed in Greece and their results were analyzed and published in the book “School Screening in Greece”, [2]. From the data of 1998 Hellenic National Census, the population of children aged 8 to 14 years old was approximately 751.000. With the above - mentioned datum and with a national mean IS incidence of 2.9%, (Cobb angle $\geq 10^\circ$), 21.779 children were expected to have scoliosis of variable severity. 980 of them would need conservative treatment using a brace, while 41 children would need surgical treatment, [5].

The examination of the role of the industrial environment on IS prevalence in the industrialized region revealed that prevalence was similar to this observed in other non-industrialized geographical departments of the country. This implies that industrial environmental factors probably do not significantly influence the prevalence of AIS, [7].

Further in this report the outcomes of our SSS program are summarized and the contribution of these studies on aetiology/scoliogeny of IS, Table 1.

1. Study of the influence of environmental factors in IS prevalence (geographical latitude), menarche and the role of melatonin in IS pathogenesis.

In the international peer review published literature, the IS prevalence is dissimilar in various geographic latitudes, namely higher values are reported in northern countries. The regression of prevalence of IS of each place by the latitude of the place where each study was conducted, was found statistically significant ($p < 0.001$). This observation could be related to the influence of the geography of a specific region on human biology and could be affected by socioeconomic and environmental factors such as temperature, humidity or light, [8, 9].

The above finding was documented using peer review reports of IS prevalence in countries only of the norther hemisphere. Currently we encourage

TABLE 1.
Contribution of the SSS program on aetiology/scoliogeny of idiopathic scoliosis (IS)
a. Study of the influence of environmental factors in IS prevalence (geographical latitude) and the role of melatonin in IS pathogenesis
b. prevalence of scoliosis in women with visual deficiency
c. age at menarche in IS girls and its relation to laterality of the curve
d. the role of the brain in trunk asymmetry (TA) and IS pathogenesis
e. thoracic cage in normality and its role in IS pathogenesis/scoliogeny
f. the impact of the lateral spinal profile (LSP), (sagittal plane)
g. the role of the intervertebral discs (IVD) in IS pathogenesis
h. association of cavus foot with IS
i. anthropometric data in IS patients
j. SSS referrals and surface topography (ST)
k. SSS referrals and Leg Length Inequality (LLI)
l. Study of the BMI in relation to the TA of healthy adolescents, a pathophysiologic concept possibly common with IS
m. Parental age at birth as a possible epigenetic factor/mechanism for the TA of child

similar studies in the southern hemisphere countries in order to confirm the results. The initial findings show that countries further southern from the equator like Chile, have increased value of IS prevalence, [10]. Similar studies are now organized and being contacted in Brazil and Indonesia, countries that extend from the equator and much further south.

In peer review published literature the menarche is reported to be different in places of various geographic latitudes, namely in higher values in northern countries. Consequently, we hypothesized a possible association between prevalence of IS and age at menarche among normal girls in various geographic latitudes, [11].

The regression of prevalence of IS and age at menarche by latitude documented for each study, was found statistically significant ($p < 0.001$) and both were following a parallel ascending course of their regression curves, especially in latitudes northern than 25 degrees. This means that late age at menarche is matching with higher prevalence of IS, a finding which was not reported earlier in the available to us peer review literature.

Melatonin, "the light of night", is secreted from the pineal gland, principally at night. Among other biological functions, the hormone is involved in the sexual maturation of females, [12]. Melatonin acts in gonads indirectly, reducing the secretion of gonadotropins and mainly the luteinizing hormone (LH), [13]. The menarche is related with episodic secre-

tion of LH during the night, [14, 15]. Melatonin may play a role in the timing of puberty and the onset of puberty in humans may be related to the decline in melatonin secretion that occurs as children grow, [16]. We hypothesized that the amount of light, which is different in different geographical latitudes influences melatonin secretion and alters age at menarche. Delayed puberty results in a prolonged period of spine vulnerability when other aetiological factors are contributing to the development of IS, [11]. Furthermore, we found that this positive association between prevalence of IS and geographic latitude is present only in girls and not in boys. This contradictory association implicates that the possible role of environmental factors acts in a different way between boys and girls, [8].

The role of melatonin deficiency in IS pathogenesis was proposed after development of scoliosis similar to those of human's IS in pinealectomized chickens, [17]. Fagan et al, 2009, reported that caution is advised when drawing conclusions regarding the pathogenesis of AIS from this model, [18]. Several other publications argued that there is a controversy whether chickens are appropriate models for studying scoliosis, because they present extrapineal sites of melatonin production that contribute to circulating melatonin levels, in contrast to humans that no extrapineal sources affect the circadian rhythm of melatonin. Melatonin's actions appear to differ between humans, other mammals, and other vertebrates, [19,

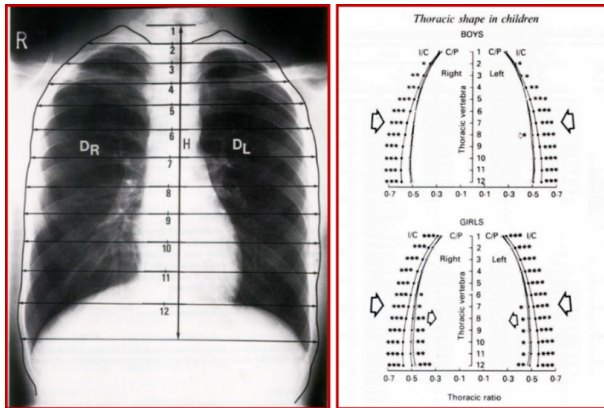


Figure 1. Left figure - Chest radiograph to show the method of measurement for calculation of thoracic ratios (TR) from T1-T12. DR (DL) = distance measured from midpoint of the distal end-plate of each vertebral body (T1-12) to the outline of the lateral border of the right (left) thoracic cage. H = distance from T1-12. Right figure - TRs for infancy (I), childhood (C) and puberty (P). (Modified from Grivas et al 1991). [38].

20, 21, 22, 23]. Also, pinealectomy in bipedal nonhuman primates did not produce scoliosis in any of the 18 monkeys examined in a mean follow up period of 28 months, [24]. Furthermore, no increased IS prevalence has been observed in children after pinealectomy or pineal irradiation because of pineal neoplasias, although they have a lack of serum melatonin in the majority of studies, [25, 26, 27].

2. Prevalence of scoliosis in women with visual deficiency.

Girls with visual deficiency were found to have a delayed age at menarche (13 years old versus 12.58 years of controls) and their prevalence of IS was found to be much increased (42.3%). This is strongly supporting the hypothesis that in blind girls, the lack of light through the increased levels of melatonin may delay sexual maturation and expose for longer period the growing immature spine to detrimental causative factors of IS, which result in increased IS prevalence, [28].

3. Age at menarche and its relation to laterality of the curve.

The age at menarche in IS girls is reported to be delayed, compared to nonscoliotic girls. This gener-

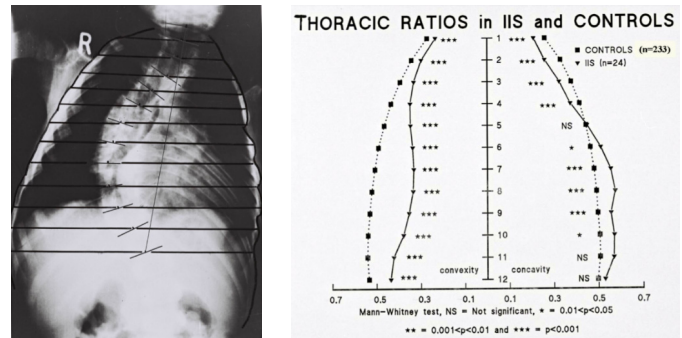


Figure 2. In IIS the thoracic cage is under-developed compared to non-scoliotic counterparts. (Modified from Grivas et al 2006), [34].

alized statement questions the accuracy of reported records for age at menarche which are found different at different geographical latitudes. Our findings, derived from our SSS program referrals in Greece, didn't show any statistically significant difference of the age at menarche between scoliotic and non-scoliotic girls, [29]. Additionally, analyzing the laterality of the curve in relation to age at menarche we found that premenarchal IS girls presented predominantly with a left primary scoliotic curve, while postmenarchal IS girls presented predominately with a right primary scoliotic curve [30]. This observation which associates the age of IS onset with the laterality of the curve requires further investigation and this finding would not be figured out without running a SSS program, [30]. Both of the above-described findings (no different menarchial onset of the non-IS and IS girls and the different laterality of the curves in pre and post menarchial IS girls) were confirmed in a recent research study in Serbia and Bosnia - Herzegovina, areas with almost similar geographical latitude with Greece, [31]. As known, in infancy when boys develop IS, they are more frequently presented with left sided thoracic curves. Our finding on laterality of curves in pre-menarchial scoliotic females, revealed by the analysis of data of the referred children from SSS, justifies the hypothesis that the pre-menarchial developed left curves may be due to the same mechanisms/causes with those functioning for the more frequently developed left thoracic curves in infant IS males. This finding may be due to the impaired development of

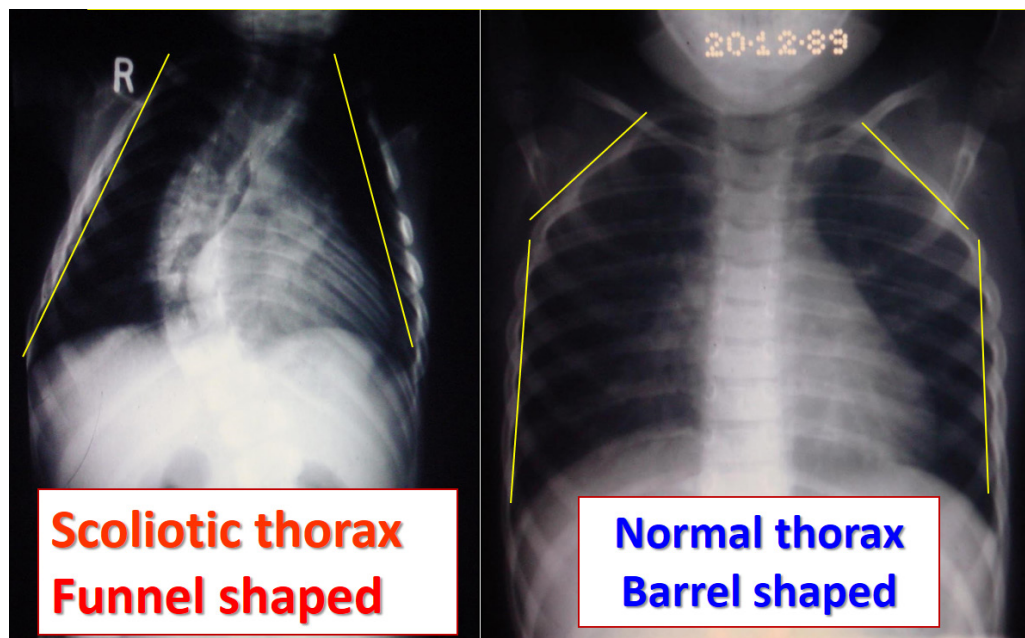


Figure 3. The thorax in IIS is funnel shaped compared to the thorax in controls which is barrel shaped.

the infantile scoliotic thoracic cage, but this suggestion needs more investigation, [32, 33, 34, 35].

4. The role of the brain in TA and IS pathogenesis.

The analysis of the data for truncal symmetry and asymmetry using the scoliometer, collected from our SSS program, from symmetric controls and asymmetric children showed that there is a significant correlation of mild mid-thoracic asymmetry to the dominant brain hemisphere in terms of handedness, in children who are entitled at risk of developing IS, [36, 37].

5. The thoracic cage in normality and its role in IS pathogenesis/scoliogeny

The introduction of segmental thoracic ratios (TR) method in thoracic anteroposterior radiographs. This new segmental thoracic ratios (TR) radiographical method of segmentally assessment of growing normal thorax from T1-12, was conceived and presented by the author, [38]. On each chest radiograph, the outline of the lateral border of the thorax is drawn, (Figure 1). Next, the midpoint of the distal end-plate at each vertebral body from T1- 12 is marked. Then, at each segment, the distance from the middle of the end-plate to the outline of each of

the right and left thoracic cage is measured. These distances are standardized by dividing by the measured T1- T12 distance. They are termed segmental right and left thoracic ratios (TRs). Ratios are also calculated segmentally for the total width of the chest (right plus left measured lengths).

The TR method was used to study the thorax of infantile IS (IIS), and compare it with this of controls, figures 2. Using the segmental TRs method it was shown that in IIS the thoracic cage is under-developed compared to non-scoliotic counterparts. The thorax in IIS is narrower than that of the controls, the upper chest is funnel-shaped, figure 3, and there is a predictive value of the vertebral rotation* at the upper limit of the thoracic curve of IIS, that is the vertebral counter-rotation at T4 predicts the apical vertebral rotation at follow-up, which reflects impaired rib control of spinal rotation possibly due to neuromuscular factors, which contribute also to the funnel-shaped chest, (*compared with specific rotation of Perdriolle and Vidal - the so called "specific angle of rotation". In an anteroposterior roentgenogram, specific rotation (RS) is the sum of the rotation in the axial plane of the two vertebrae adjacent to the superior end vertebrae). [32, 39, 40, 41].

The introduction of the segmental of Rib Verte-

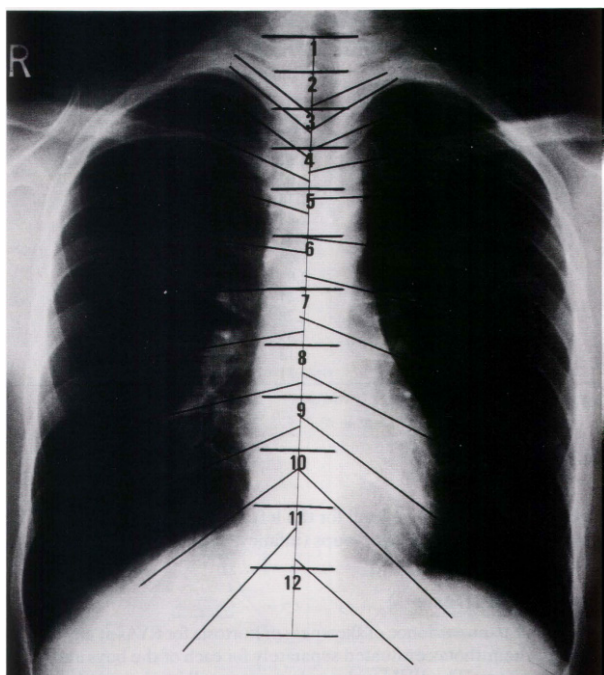


Figure 4. Segmental rib-vertebra angles from T1-T12, (modified from Grivas et al 1992).

bra Angles (RVAs) and Rib Vertebra Angle Differences (RVADs) in thoracic anteroposterior radiographs, (figures 4,5,6).

The apical RVA and RVAD was initially (1972), presented by Mehta, [42]. This radiographical method of segmental RVAs and RVADs from T1-T12, was for the first time presented for the study of the growing normal thorax, [37], (Figure 4, 5, 6).

The RVAs are a functional index which is visible on the chest radiographs. It was suggested that the differences of the RVAs between right and left side is the expression of asymmetric muscle forces acting on the thoracic cage, which deforms early and possibly transfers the deforming forces to the spine. It is concluded that that measurement of the RVAs, whether as apical RVAD or as segmental RVAs gives early information about the process of curve initiation and progression. Significantly asymmetric RVAs have been observed even at Cobb angles of 8°, i.e. before the diagnosis of scoliosis is made, [43].

Segmental Rib vertebra angle difference (asymmetry) (RVAD) in controls.

Left RVA minus Right RVAS mean in degrees

Comparing the RVAs between the mild late onset IS (10–20 Cobb degrees) and nonscoliotic children, it is shown that the late onset IS children rib cage had lower RVAs, that is the thorax is narrower. This indicates that the scoliotic thorax is under-developed compared to non-scoliotic counterparts, [44], Figure 7.

During growth the thorax remodels. The drooping of the lower ribs of girls, which is more evident than in boys, occurs between infancy and childhood, or largely before the girl's pelvis increases in size, [37, 38, 44, 45, 46, 47a, 47b, 48].

Relative narrowing of the chest during growth: a hypothesis involving pelvic and thoracic inertia in gait.

We postulated a hypothesis, namely that the mechanism by which this rib droop occurs is through neuromuscular factors. Between childhood and puberty, the increased rotational inertia generated by the larger pelvis of girls is not associated with further lower rib drooping but, we suggest, with rib growth impairment (relative to spinal growth) in the lower half of the chest. During the same developmental period (childhood to puberty), boys show no further relative narrowing of the chest, [49, 50].

Also, our hypothesis is that the relative diminution of TRs particularly of the lower thorax with increasing age in boys and girls may be a mechanism to reduce the rotational inertia created in the thorax from the rotating thoracolumbar spine and pelvis in gait, [51, 52]. Such a mechanism would conserve energy. It will be recalled that inertia (I) equals Σmr^2 , (where Σ =sum, m= mass and r = radius). Hence, a relative diminution of thoracic width would produce a much greater reduction of rotational inertia, because inertia is a function of the square of the distance. In evolutionary terms, the chest narrowing is consistent with an adaptation of the human ribcage to bipedal gait. This hypothesis suggests that RVA drooping, as a mechanism to narrow the chest for mechanical reasons (energy conservation), can go so far; below a certain RVA droop, rotation control of the spine would be compromised. To avoid this situation in girls, rib growth is impaired in order to narrow the lower thorax further between childhood

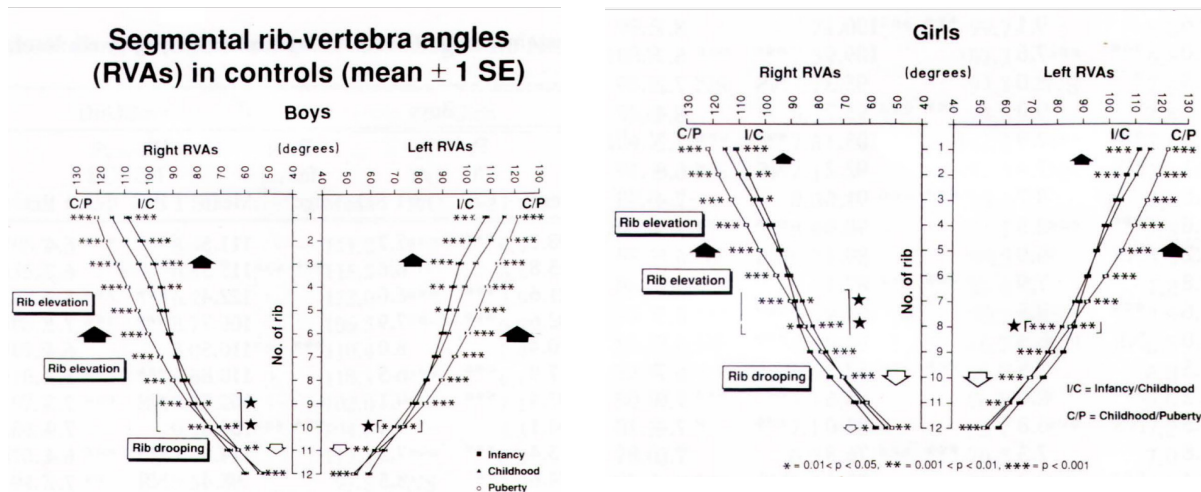


Figure 5. Segmental rib-vertebra angles (RVA's in degrees) in boys and girls for each of the infancy (I), childhood (C), and puberty (P) groups by rib level. (modified from Grivas et al 1992).

and puberty to lessen the rotational inertial burden, [37].

The introduction of double rib contour sign (DRCS) and the Rib Index (RI) (Fig. 8).

This sign and index were initially presented in Greece during the 25th “Nicolas Giannestras-Panayiotis Smyrnis” Anniversary Symposium of Spinal Column Diseases, at the Porto Rio Hotel, Patras, Greece, 21-23 May 1999, [53]. Later it was presented in the International Research Society of Spinal Deformities meeting at Clermont Ferrand, Château du Marand, France, 23-26 May 2000, [54], and it was published in 2002. This publication focused on the implications of DRCS on the aetiology of idiopathic scoliosis, [55].

All lateral spinal radiographs in IS show a DRCS of the thoracic cage, a radiographic expression of the rib hump (RH), Figure 8. The outline of the one hemi-thorax (convex) overlies the contour of the other hemi-thorax (concave). Then the rib index (RI) method extracted from the DRCS was introduced in order to quantify the severity of the double rib contour (DRC) that is to evaluate the rib hump deformity, in IS patients in an attempt to create a safe reproducible way to assess the RH deformity based on lateral radiographs. This assessment actually represents the appraisal of the transverse plane rib-cage

deformity, a method applied to the lateral spinal radiographs. The application of Rib index is useful for documentation of the thoracic deformity before any treatment, the assessment of physiotherapy treatment, the assessment of brace treatment and the pre- and post-operative assessment of the rib-cage deformity correction on the transverse plane, [56].

The effect of growth on the correlation between the spinal and rib cage deformity.

Growth has a significant effect in the correlation between the thoracic and the spinal deformity in girls with idiopathic scoliosis. Using the RI as an expression of the thoracic deformity and Cobb angle as an expression of the spinal deformity, the existence of any correlation between these two parameters was tested. Linear association was seen only between thoracic Cobb angle and rib-index in the age group of 14-18 years. (Predicted Thoracic Cobb Angle = - 6.357 + 7.974 × (Rib-Index). Figure 9. This new finding was very interesting as it implicated that in younger children the thoracic deformity and the spinal deformity are not associated but only in older children, [57]. Dr Smyrnis 2000, seven years ago, observed this phenomenon based on his clinical experience only and noted it in his lecture published in the cited book, [2], that is “the most critical

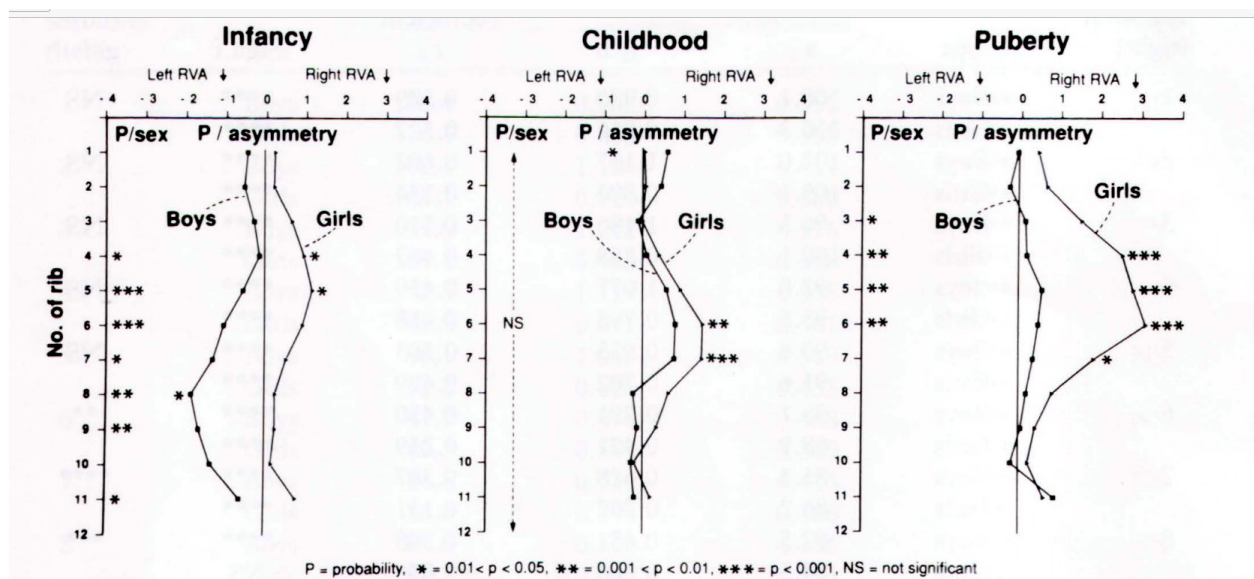


Figure 6. Segmental rib-vertebra angle asymmetry (rib-vertebra angle difference, RVAD) in the “normal” boys and girls for each of the infancy (I), childhood (C), and puberty (P) groups. Overall, the pattern of this “normal” RVA asymmetry reflects the age, sex, and laterality patterns of IS. It suggests that extremes of RVADs may be etiological factors for both infantile and AIS. (Modified from Grivas et al 1992).

age for mass screening is from 10-13 years old, and in this cohort of ages it is usually observed 3:1 ratio between clinically and radiologically positive children”.

Growth seems to have a significant effect in the correlation between the rib cage and the spinal deformity in girls with IS. The findings of this study support the hypothesis that the correlation between thoracic surface and spinal deformity is weak in younger children, implicating that the thoracic cage deformity precedes that of the spine in the pathogenesis of IS, [57, 58].

6. The impact of the lateral (sagittal plane) spinal profile (LSP).

In a study of children, referred from our SSS program, suffering mild (10-20 degrees) IS, it was found that the LSP in thoracic spine hypokyphosis is not a predisposing aetiological factor. This was concluded because in the initiation of IS curves the LSP is similar to that of their healthy controls, [59]. This study provides evidence that thoracic hypokyphosis by alleviating axial rotation is rather a compensatory mechanism than an aetiological factor of

IS pathogenesis, figure 10.

The above finding was confirmed in a recent study of the LSP of the spine in IS using the surface topography, scolimetric assessment and the radiographical imaging, [60]. Thus, it is clear that hypokyphosis is not a primary causal factor for the commencing of mild or moderate IS curve, but it could be considered as a permissive factor in the scoliology, [60], figure 11.

7. The role of the intervertebral discs (IVD) in IS pathogenesis.

In the postero-anterior radiographs of mild IS children referred from our SSS program, it was shown that the deformity appears first at the level of the IVD, which is found wedged. The deformity of the vertebral body in spinal column follows. The deformation of the apical IVD and its adjacent IVDs seems to be an important progressive factor in IS pathogenesis, [61, 62], figure 12.

8. Association of cavus foot with IS.

It is well known, that in a number of certain neuromuscular diseases cavus foot and scoliosis are

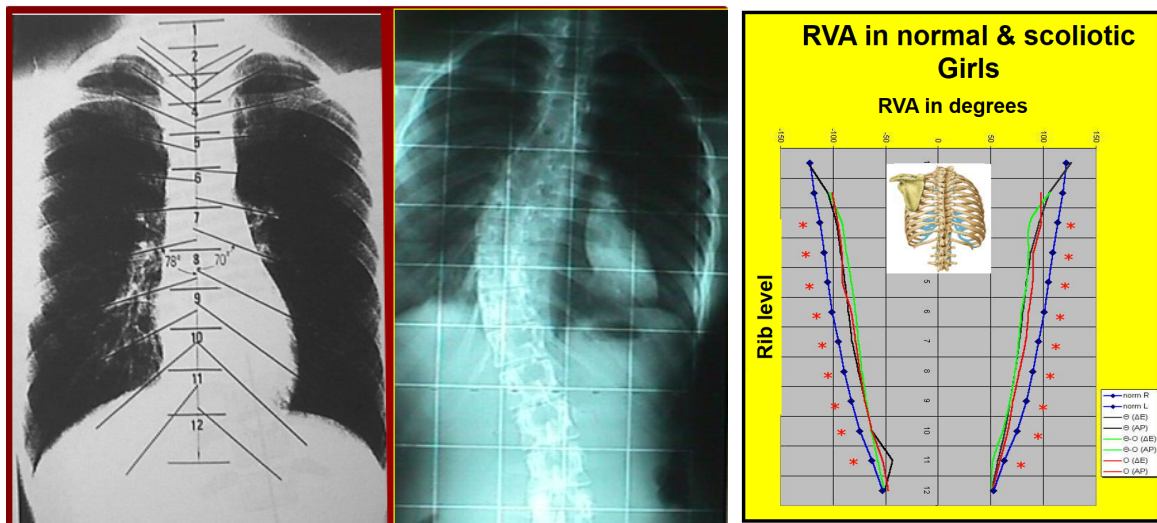


Figure 7. The scoliotic thorax is under-developed compared to non-scoliotic counterparts. (Modified from Grivas et al 2002), [44].

presented together. Such diseases are muscular dystrophy, cerebral palsy, Friedrich’s ataxia, Charcot-Marie-Tooth disease, poliomyelitis, syringomyelia or spinal cord tumors. Having in mind this observation many authors studied the relationship between foot morphology (especially pes cavus) and scoliosis, as it was supposed that these pathologic conditions may share a common cause.

During the first 13 years (1996 – 2009) of our Thrasio Hospital SSS program implementation we also contacted foot printing. The Harris-Beath mat for foot-printing was used. We investigated if there is a relationship between cavus foot, type 1 of footprint [84], figure 13, and IS in a population referred from our SSS program. The significant correlation between IS and cavus foot as it has elsewhere been reported was not verified in our study. No positive correlation was found between IS and flat foot [84], type 6 of footprint, figure 13, as well in our study, [63, 83].

9. The somatometric parameters.

Analysis of our SSS program collected data yielded the somatometric parameters and comparison of these parameters of nonscoliotic children with their counterparts suffering mild IS. The scoliometer readings in both standing forward bending position (StFBP) Adam’s test and sitting forward

bending position, (SiFBP) test of 2071 children and adolescents (1099 boys and 972 girls) aged from 5 to 18 years old were studied. The mean frequency of TA of 7 or more degrees was 3.23% for boys and 3.92% for girls at the StFBP and 1.62% and 2.21% at the SiFBP, respectively. Girls are found to express higher frequency of TA than boys. Right TA was more common than left. The sitting position is the preferred screening position for examining the rib or loin hump during school screening as it demonstrates the best correlation with the spinal deformity exposing the real TA, [64]. The cross-sectional study of TA using the scoliometer, in normal juveniles provides data which describe the evolution of TA, from early childhood to adolescence. Juveniles were found more symmetric than adolescents, who were studied previously in a different study. Furthermore, juvenile girls were found more symmetric than boys. Juvenile TA pattern seems to be in accordance with the higher incidence of juvenile IS in boys. Furthermore, severe TA, which could be correlated with a scoliotic curve, was found to be more common to the left side. These reports provided information about the variability of back morphology in normal juveniles. The amount of TA detected in children during SSS, which may reveal a spinal curve, is the main indicator/marker for referral and further orthopaedic assessment but

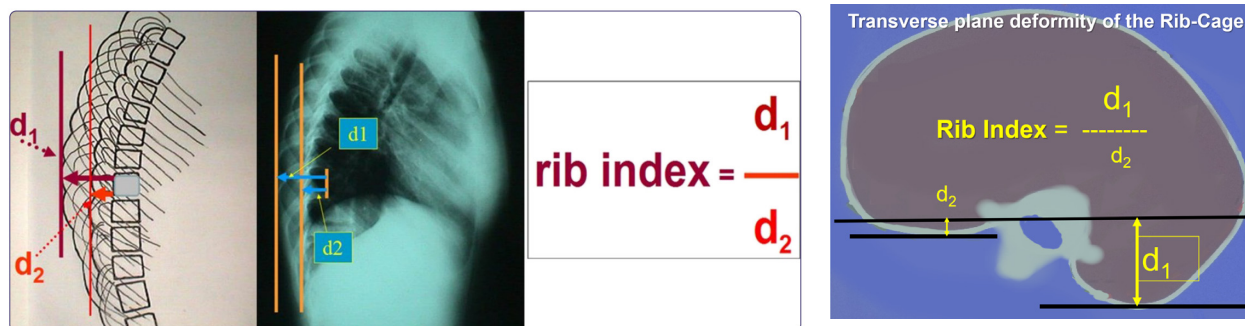


Figure 8. The DRCS and the RI in the lateral thoracic radiographs used for the thoracic transverse plane deformity assessment, (Modified from [56]).

can also be used as a baseline for further research on IS aetiology, [65, 66].

The creation of a database of the collected data with somatometric parameters, i.e. of body weight and height from the entire cohort of the SSS program children provided the opportunity to compare these parameters of nonscoliotic children with their counterparts suffering IS with curves of a Cobb angle 10 degrees. In our studied Mediterranean sample of the population, the somatometric parameters of height and weight in children with mild IS, regardless of curve type and site, were not found statistically different from their nonscoliotic counterparts, [67].

10. SSS referrals and surface topography (ST). (Figure 14).

The evaluation of the effects of the Adam's standing forward bending position (StFBP) test versus the standing erect (SE) position on back TA was conducted using the scoliometer readings in the Adam's StFBP and the 4D Formetric (the Diers surface tomography apparatus 4DF; Diers International, Schlangenbad, Germany) readings in the SE position. It was shown that back TA in children and adolescents differs in the StFBP and 4DF Erect (SE) positions. This is probably attributed to the complicated truncal anatomy, and the results of this study may be used as a useful foundation for further understanding of torso dynamics, [68].

11. SSS referrals and LLI.

In children and adults LLI may affect their posture, gait, and several truncal parameters, and it can

cause scoliosis. In our study we assessed truncal and spinal changes due to mild LLI using ST analysis. The LLI was statistically significant correlated to the 4DF, reading of pelvis rotation, pelvic tilt (pelvic obliquity), and surface rotation. The scoliometer readings of ATR/ATI in the lumbar region were statistically significant correlated to the 4DF readings of pelvic tilt (pelvic obliquity). The normally symmetric truncal parameters were also statistically significant changed, all these deviating from the line of gravity through the vertebral prominence. Interestingly, LLI was not statistically significant correlated to the scoliosis angle and the scoliometer reading at the lumbar level, [69].

12. Study of the BMI in relation to the TA of healthy adolescents, a pathophysiologic concept possibly common with IS.

Studying the somatometric data collected from children examined in our SSS program, their body mass index (BMI) was calculated, that is the measure of body fat based on height and weight) and consequently we formulated the following hypothesis. This hypothesis suggested that the pathogenesis of severe TA in girls and boys, has the same mechanism as that proposed for AIS girls, namely: severe TAs are initiated by a genetically-determined selectively increased hypothalamic sensitivity (up-regulation, i.e. increased sensitivity) to leptin, with asymmetry as an adverse response to stress (hormesis), mediated bilaterally mainly to the growing trunk via the sympathetic nervous system (leptin-hypothalamic-sympathetic nervous system

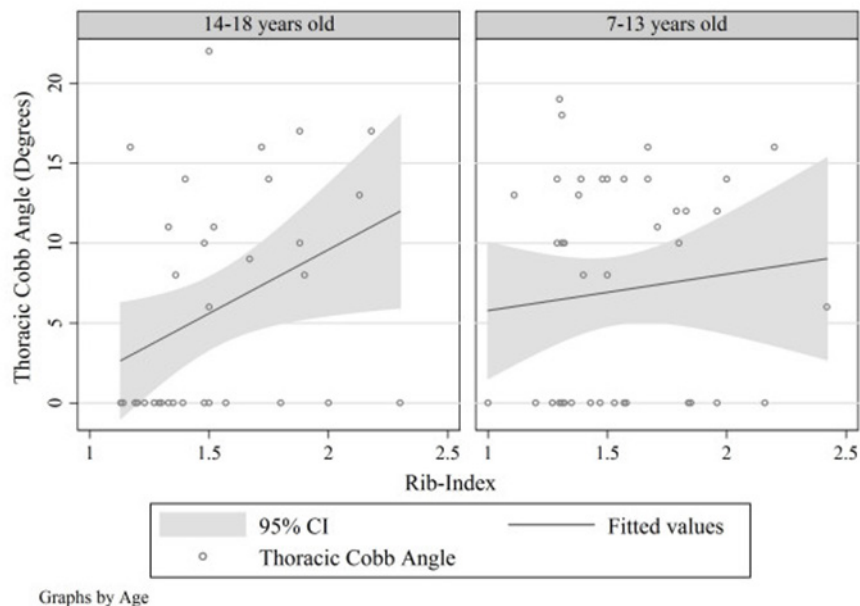


Figure 9. A linear association was the one between Thoracic Cobb Angle and rib-index in the age group of 14–18 years not in younger aged girls. This implicated that in younger children the thoracic deformity and the spinal deformity are not associated but only in older children. (Predicted Thoracic Cobb Angle = $-6.357 + 7.974 \cdot (\text{Rib-Index})$). [57].

(LHS) concept), [70].

13. Parental age at birth as a possible epigenetic factor/mechanism for the TA of child.

Parental age at birth is implicated as a possible epigenetic mechanism for the in TA of a child [71, 72, 73, 74]. The age of the mother as an environmental factor in the general population may potentially influence epigenetically the onset of TA in boys more than girls as well as during growth. The significance of the findings is based on the principle that the endometrial environment is vital to the planning of the fetus for health and illness throughout its life, [75, 76, 77]. Consistent findings reported from the USA, Edinburgh and Sweden reveal increased maternal age as a risk factor for AIS, suggesting maternal factors can predispose to it, [78, 79, 80]. It seems that males are more affected by this factor but, unexpectedly in our study, by younger and not older mothers as reported for AIS in the literature, [81, 82].

It is very interesting to note that this clinical research on IS aetiology based on SSS is the only “Human evidence based” research contributing to our

understanding of IS scoliogeny and we solidly recommend it.

In conclusion, the outcomes and the hypothesized concepts related to IS scoliogeny, resulted from our SSS program and the study of the imaging of non-IS and IS growing thoracic cages are outlines.

1. The amount of light, which is different in different geographical latitudes influences melatonin secretion and alters age at menarche. Delayed puberty results in a prolonged period of spine vulnerability when other aetiological factors are contributing to the development of IS, the prevalence of which varies in different geographical latitudes.

2. In norther geographical latitude the IS prevalence is higher.

3. The prevalence of IS is higher in females with Visual Deficiency.

4. Premenarchal IS girls present predominantly left primary sciotic curve, while post-menarche IS girls present predominately right primary sciotic curve

5. There is a significant correlation of mild

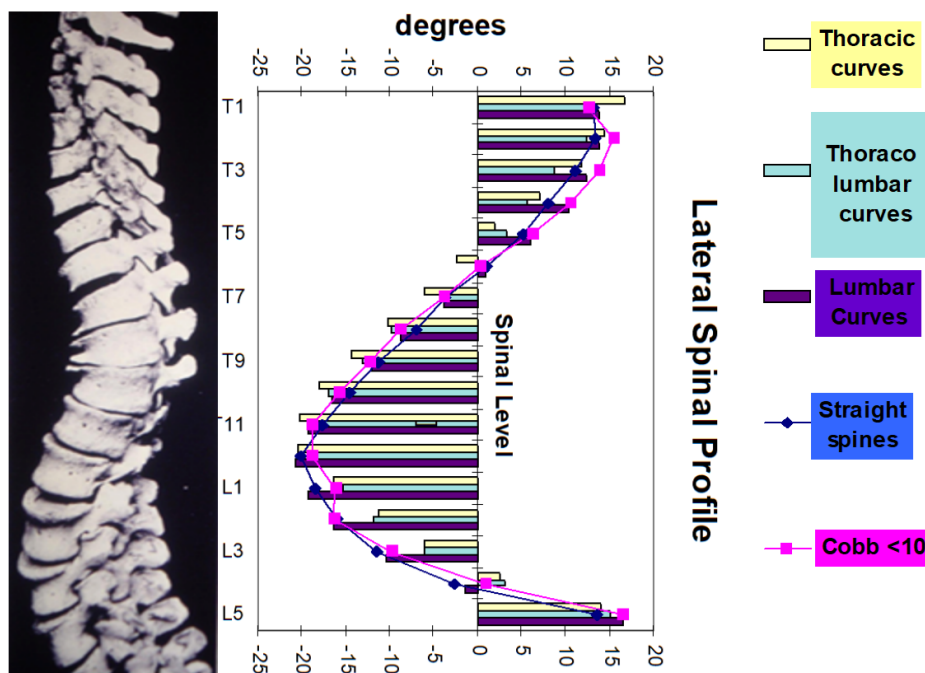


Figure 10. The LSP in children with 1) straight spines, 2) with spinal curvature having a Cobb angle less than 10°, and 3) in scoliotic children with a) thoracic, b) thoracolumbar and c) lumbar curves. Comparing the children’s LSP between the above groups, using Mann-Whitney test, it was shown that no statistical difference was noticed, in almost all spinal levels. (Modified by Grivas et al 2002, [59]).

mid-thoracic asymmetry to the dominant brain hemisphere in terms of handedness, in children who are at risk of developing IS.

6. Introduction of the segmental thoracic ratios method assessment of thorax in thoracic anteroposterior radiographs.

7. Introduction of the segmental of RVA and the segmental RVAD method for assessment of the growing thorax in thoracic anteroposterior radiographs.

8. The pattern of “normal” segmental RVAD in “normal” boys and girls for each of the infancy, childhood, and puberty groups, reflects the age, sex, and laterality patterns of IS. It suggests that extremes of RVADs may be etiological factors for both infantile and AIS.

9. The thorax in IIS is funnel shaped compared to the thorax in controls which is barrel shaped.

10. During normal growth the thorax remodels. There is drooping of the lower ribs both in boys and girls. The drooping of the lower ribs of girls, is more evident than in boys.

11. The relative narrowing of the lower chest during growth: a hypothesis involving pelvic and thoracic inertia in gait. The relative diminution of TRs and RVA particularly of the lower thorax with increasing age in boys and girls may be a mechanism to reduce the rotational inertia created in the thorax from the rotating thoracolumbar spine and pelvis in gait.

12. The introduction of DRCS and the RI. RI is used for a. the documentation of the thoracic deformity, b. assessment of physiotherapy, c. assessment of brace treatment and d. pre- and post-operative assessment; of the rib-cage deformity correction on the transverse plane.

13. The effect of growth on the correlation between the spinal and rib cage deformity. In younger children the thoracic deformity and the spinal deformity are not associated but only in older children.

14. The impact of the LSP, (sagittal plane). The LSP, (hypokyphosis) is not a primary causal factor for the commencing of mild or moderate IS curve, but it is a permissive factor for the scoliogeny.

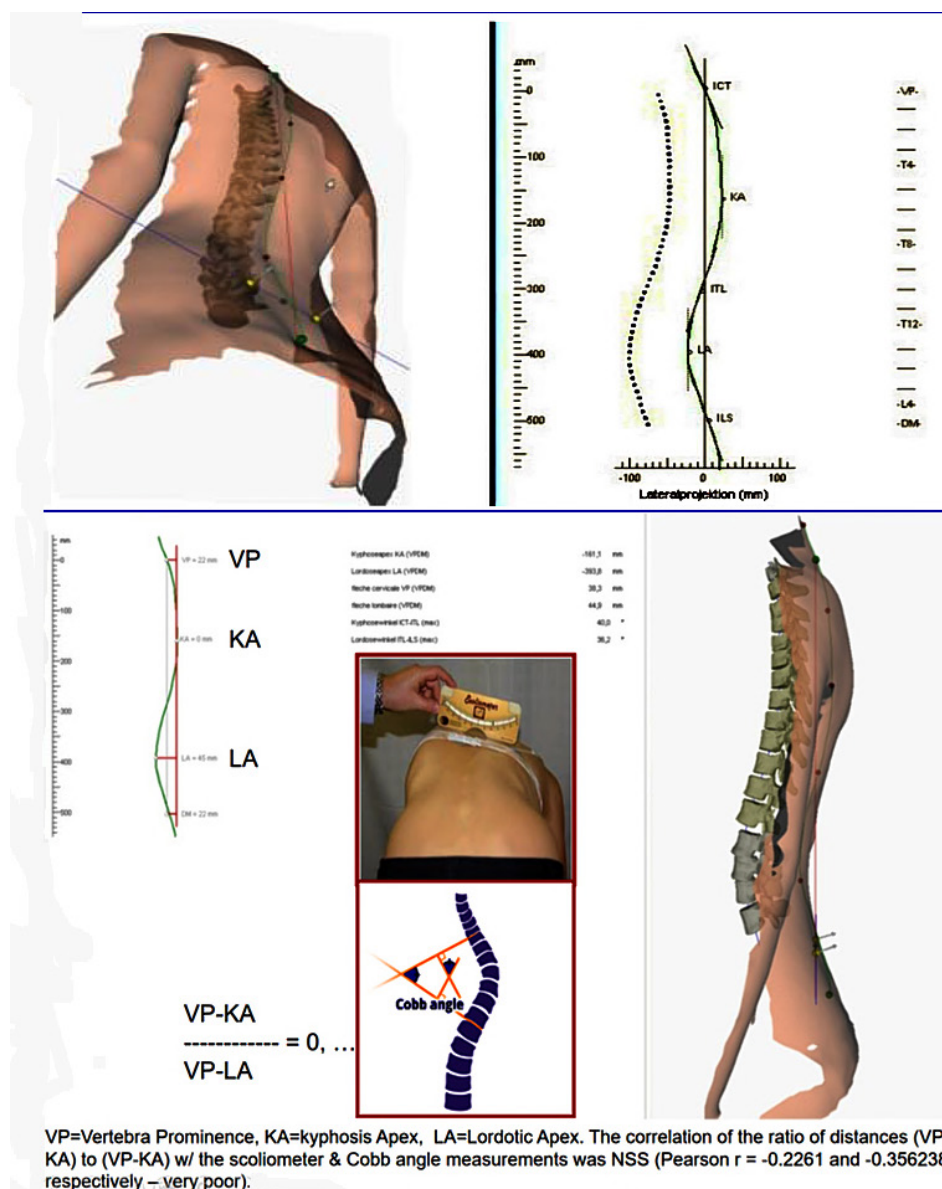


Figure 11. Study of the sagittal profile of the spine in IS using surface topography. (Modified by Grivas et al 2021, [60]).

15. The role of the intervertebral discs (IVD) in IS pathogenesis. The deformity appears first at the level of the IVD. The deformity of the vertebral body in spinal column follows.

16. There is no association of cavus foot and IS.

17. The somatometric parameters. Girls are found to express higher frequency of TA than boys. Right TA is more common than left. The sitting position is the preferred screening position for examining the rib or loin hump during SSS as it demon-

strates the best correlation with the spinal deformity exposing the real TA.

18. SSS and ST. TA in children and adolescents differs in the StFBP and 4DF Erect (SE) positions. This is probably attributed to the complicated truncal anatomy, and the results of this study may be used as a useful foundation for further understanding of torso dynamics.

19. LLI and ST. LLI is not statistically significant correlated to the scoliosis angle and the scoli-

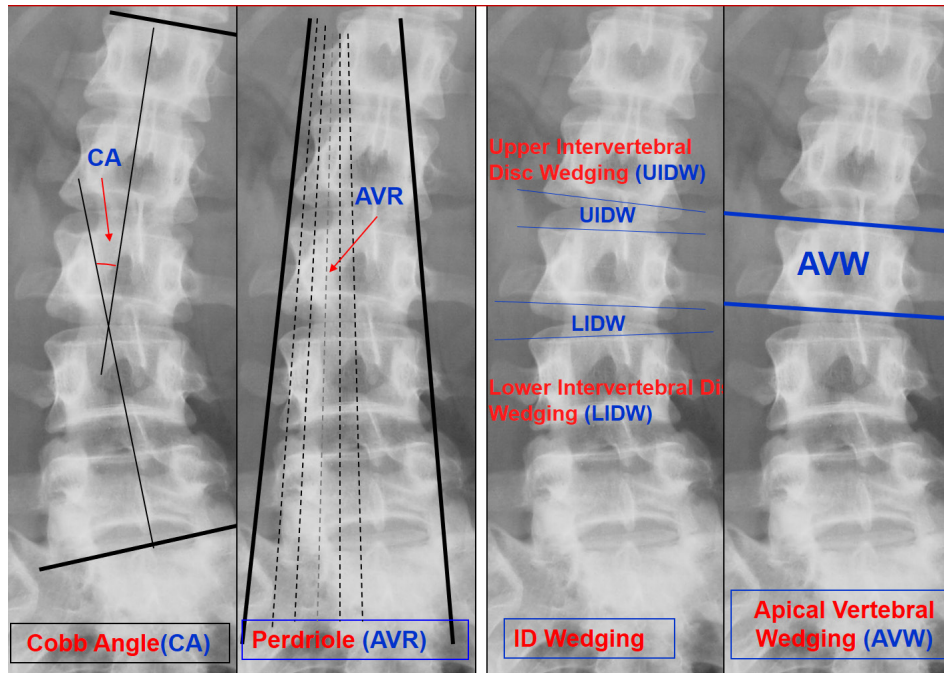


Figure 12. The deformity appears first at the level of the IVD. (Modified by Grivas et al 2021, [61, 62]).

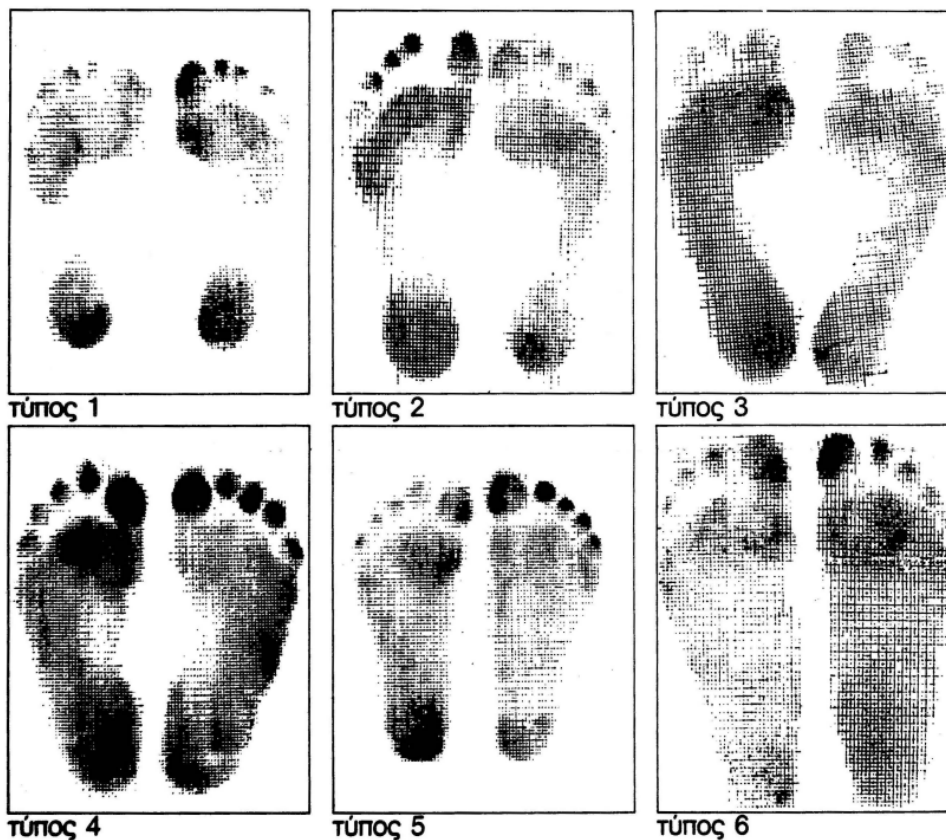


Figure 13. The footprint type 1, of cavus foot, according to the 6 types of footprints, (Grivas 1984 [83]), was not associated with IS.

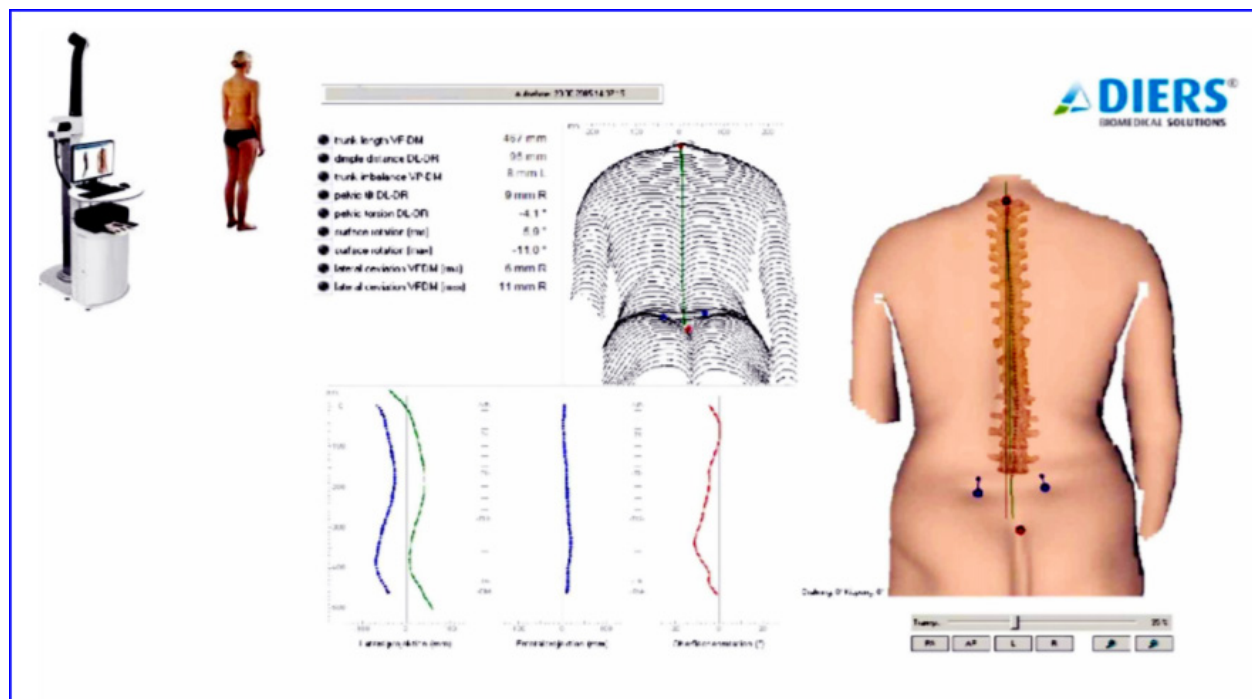


Figure 14. Study of the LLI in children suffering mild IS using the 4DF apparatus. (Modified from [68]).

ometer reading at the lumbar level TA in children and adolescents.

20. We postulated a hypothesis studying of the BMI in relation to the TA of healthy adolescents: we suggested a pathophysiologic concept possibly common with IS.

21. The parental age at birth is an epigenetic factor/mechanism for the TA of child. Males are more affected by this factor, if born by younger and not older mothers.

Abbreviations

- ATI = angle of truncal inclination
- ATR = angle of truncal rotation
- AIS = Adolescent Idiopathic Scoliosis
- BMI = body mass index
- DRCS = double rib contour sign
- IS = idiopathic scoliosis
- IIS = Infantile Idiopathic Scoliosis
- IVD = intervertebral discs
- AIS = adolescent idiopathic scoliosis
- LLI = Leg length inequality
- LHS = leptin-hypothalamic-sympathetic
- RI = Rib Index

RVA = Rib Vertebral Angle

RVAD = Rib Vertebral Angle Difference

StFBP test = forward bending position test

SiFBP = sitting forward bending position,

SSS = School scoliosis screening

SE = standing erect

ST = surface topography

TA = trunk asymmetry

TR = thoracic ratio

4DF = 4D Formetric

Competing interests

The author declares that he has no competing interests.


Author's contribution

The author was responsible for organizing the SSS program and the examination team, managed the administration of it, involved in the examination of children, conceived and postulated the described concepts written in this report, implemented the literature search and drafted this manuscript.

Acknowledgments

The author of this article express his heartfelt gratitude

and appreciation to the Board of both "Thrasio" and "Tzaneio" hospitals. All the doctors, physiotherapists, health visitors and nurses, who participated in the examination of children in all these successful 25 years' "journey" for the implementation of our program. Especially to health visitors Mrs. Christina Mazioti, for supporting, organizing, supervising all the visits to schools and feeding to SPSS platform the resulted data. Also Mrs. Despina Papagianni, and Mrs. Aristeia Mamzeri, Dr Michail Chandrinos and Dr George Vynichakis for

being enthusiastic and active constantly within the program. Doctor Constandinos Mihas for conducting the statistical analysis of the majority of our related published studies. The school teachers for their enthusiasm and kindness to help and facilitate the program and to any other involved official person for the authorization and encouragement for the implementation of this beneficial endeavor for medical, social, and scientific reasons. At last but not least all the examined school children and adolescents. 

REFERENCES

1. Smyrnis PN, Valavanis J, Alexopoulos A, Siderakis G, Gianestras NJ): "School Screening for Scoliosis in Athens". J Bone Joint Surg Br. 1979 May;61-B (2):215-7. doi: 10.1302/0301-620X.61B2.438274. PMID: 438274.
2. School Screening in Greece, Ed. TB Grivas, 2nd Edition, Publisher PC Paschalidis, 2000, Athens Greece.
3. Soucacos PN, Soucacos PK, Zacharis KC, Beris AE, Xenakis TA. School-screening for scoliosis. A prospective epidemiological study in northwestern and central Greece. J Bone Joint Surg Am. 1997 Oct;79(10):1498-503. doi: 10.2106/00004623-199710000-00006. PMID: 9378735.
4. Soucacos PN, Zacharis K, Gelalis J, Soultanis K, Kalos N, Beris A, Xenakis T, Johnson EO. . Assessment of curve progression in idiopathic scoliosis. Eur Spine J. 1998;7(4):270-7. doi: 10.1007/s005860050074. PMID: 9765033.
5. Grivas TB, Koukos K, Koukou UI, Mazioti Ch, D Polyzois BD. The incidence of idiopathic scoliosis in Greece--analyais of domestic school screening programs Stud Health Technol Inform. 2002; 91:71-5. PMID: 15457697.
6. Grivas TB, Vasiliadis ES, Rodopoulos G, Kovanis I. School screening as a research tool in epidemiology, natural history and aetiology of idiopathic scoliosis. Stud Health Technol Inform. 2008; 135:84-93. PMID: 18401083.
7. Grivas TB, Samelis P, Polyzois BD, Giourelis B, Polyzois D. School screening in the heavily industrialized area--Is there any role of industrial environmental factors in idiopathic scoliosis prevalence? Stud Health Technol Inform. 2002; 91:76-80. PMID: 15457698.
8. Grivas TB, Vasiliadis E, Savvidou O, Mouzakis M, Koufopoulos G. Geographic latitude and prevalence of adolescent idiopathic scoliosis. Stud Health Technol Inform 123, 2006, 84-89, MID: 16759371, PMCID: PMC1501058, DOI: 10.1186/1748-7161-1-9.
9. Dossus L, Kvaskoff M, Bijon A, Engel P, Verdebout J, Fervers B, Boutron-Ruault MC, Clavel-Chapelon F, Mesrine S. Int J Epidemiol. Latitude and ultraviolet radiation dose in the birthplace in relation to menarchial age in a large cohort of French women. 2013 Apr;42(2):590-600. doi: 10.1093/ije/dyt007. PMID: 23569194
10. Carcamo M, Espinoza P, Rodas M, Urrejola O, Bet-tany-Saltikov J, Grivas TB. (2022): Prevalencia, riesgo de progresión y calidad de vida en estudiantes tamizados para Escoliosis Idopática adolescente en establecimientos educacionales de la Región Metropolitana de Chile. Prevalence, risk of progression and quality of life assessment in adolescents undergoing School Screening for adolescent idio-

- pathic scoliosis in the metropolitan region of Chile. Accepted for Publication, *Andes Pediatrica* 2022.
11. Grivas TB, Vasiliadis E, Mouzakis V, Mihas C, Koufopoulos G. Association between adolescent idiopathic scoliosis prevalence and age at menarche in different geographic latitudes. *Scoliosis* 1(1) , 2006, 9, PMID: 16759371, PMCID: PMC1501058, DOI: 10.1186/1748-7161-1-9.
 12. B Grivas TB and Savvidou OD. Melatonin the “light of night” in human biology and adolescent idiopathic scoliosis. *Scoliosis* 2007,
 13. Reiter RJ: The pineal and its hormones in the control of reproduction in mammals. *Endocr Rev* 1980, 1:109-131.
 14. Batrinos ML: *Endocrinology*. Medical Publications: P. Paschalidis Publisher, Athens; 1995:111-115.
 15. Segos C: *Puberty*. In Honorary Volume, Edited by: Professor Aravantinos DJ, Michalas SP, Goumalatios NG. Parisianos Publisher. Athens; 1999: 629-633.
 16. Brzezinski A: Melatonin in humans. *N Engl J Med*. 1997 Jan 16;336(3):186-95. doi: 10.1056/NEJM199701163360306. PMID: 8988899.
 17. Machida M, Dubousset J, Imamura Y, Iwaya T, Yamada T, Kimura J Role of melatonin deficiency in the development of scoliosis in pinealectomised chickens. *J Bone Joint Surg Br*. 1995 Jan;77(1):134-8. PMID: 7822371.
 18. Andrew B, Fagan AE, David J, Kennaway AE, Andrew P, Oakley Pinelectomy in the chicken: a good model of scoliosis? *Eur Spine J*. 2009 Aug;18(8):1154-9. doi: 10.1007/s00586-009-0927-7. Epub 2009 Apr 2. PMID: 19340465.
 19. Huether G. Melatonin synthesis in the gastrointestinal tract and the impact of nutritional factors on circulating melatonin. *Ann N Y Acad Sci*. 1994 May 31; 719:146-58. doi: 10.1111/j.1749-6632.1994.tb56826.x
 20. Minneman KP, Wurtman RJ: The pharmacology of the pineal gland. *Annu Rev Pharmacol Toxicol* 1976, 16:33-51. PMID: 180879
 21. Cavallo A: The pineal gland in human beings: Relevance to pediatrics. *J Pediatr* 1993, 123:843-51. PMID: 8229515, DOI: 10.1016/s0022-3476(05)80377-4.
 22. Huether G: The contribution of extrapineal sites of melatonin synthesis to circulating melatonin levels in higher vertebrates. *Experientia* 1993, 49:665-70. PMID: 8359272, DOI: 10.1007/BF01923948
 23. Krause DN, Dubocovich ML: Regulatory sites in the melatonin system of mammals. *Trends Neurosci* 1990, 13:464-70, PMID: 1701580
 24. Cheung KM, Wang T, Poon AM, Carl A, Tranmer B, Hu Y, Luk KD, Leong JC: The effect of pinealectomy on scoliosis development in young nonhuman primates. *Spine* 2005, 30(18):2009-13, PMID: 16166887, DOI: 10.1097/01.brs.0000179087.38730.5d.
 25. Etzioni A, Luboshitzky R, Tiosano D, Ben-Harush M, Goldsher D, Lavie P: Melatonin replacement corrects sleep disturbances in a child with pineal tumor. *Neurology* 1996, 46:261-263. PMID: 8559393, DOI: 10.1212/wnl.46.1.261 doi: 10.1212/wnl.46.1.261.
 26. Murata J, Sawamura Y, Ikeda J, Hashimoto S, Honma K: Twenty-four-hour rhythm of melatonin in patients with a history of pineal and or hypothalamo-neurohypophyseal germinoma. *J Pineal Res* 1998, 25:159-166. PMID: 9745984, doi: 10.1111/j.1600-079x.1998.tb00554.x.
 27. Vorkapic P, Waldhauser F, Bruckner R, Biegelmayr C, Schmidbauer M, Pendl G: Serum melatonin levels: a new neurodiagnostic tool in pineal region tumors? *Neurosurgery* 1987, 21:817-824, PMID: 3437947, DOI: 10.1227/00006123-198712000-00006.
 28. Grivas TB, Savvidou OD, Vasiliadis E, Psarakis S, Koufopoulos G, Prevalence of scoliosis in women with Visual Deficiency. *Stud Health Technol Inform* 123 (2006) 52-56. PMID: 17108403.
 29. Grivas TB, Samelis P, Pappa AS, Stavlas P, Polyzois D. Menarche in Scoliotic and Nonscoliotic Mediterranean Girls. Is There Any Relation between Menarche and Laterality of Scoliotic Curves? *Stud Health Technol Inform* 88 (2002) 30-6. PMID: 15456001.
 30. Grivas TB, Samelis P, Pappa AS, Stavlas P, Polyzois D. Menarche in Scoliotic and Nonscoliotic Mediterranean Girls. Is There Any Relation between Menarche and Laterality of Scoliotic Curves? *Stud Health Technol Inform* 88 (2002) 30-6. PMID: 15456001.

31. Pjanic S, Jevtic N, Grivas TB. Menarche in scoliotic and non-scoliotic balkan girls and relation between menarche and laterality of scoliotic curves. SOSORT Congress May 4-7, 2022, San Sebastian Donostia, Spain, Program book and Abstracts Proceedings, page 46.
32. Grivas TB, Burwell RG, Vasiliadis ES, Webb JK. A segmental radiological study of the spine and rib-cage in children with progressive infantile idiopathic scoliosis. *Scoliosis*, 2006 Oct 18;1:17, PMID: 17049098, PMCID: PMC1635062 , DOI: 10.1186/1748-7161-1-17.
33. Grivas TB, Burwell RG, Purdue M, Webb JK, Moulton A: The rib-cage deformity in infantile idiopathic scoliosis-the funnel-shaped upper chest in relation to specific rotation as a prognostic factor. An evaluation of thoracic shape in progressive scoliosis and control children during growth. In *Surface Topography and Spinal deformity VI* Edited by: Alberty A, Drerup B, Hierholzer E. Gustav Fischer Verlag, Stuttgart, Jena, New York; 1992:93-109. https://www.academia.edu/73501266/The_rib_cage_deformity_in_infantile_idiopathic_scoliosis_The_funnel_shaped_upper_chest_in_relation_to_specific_rotation_as_a_prognostic_factor_An_evaluation_of_thoracic_shape_in_progressive_scoliosis_and_control_children_during_growth
34. Grivas TB, Burwell RG, Webb JK: The funnel-shaped upper chest of progressive infantile idiopathic scoliosis (IIS): significance for rib growth patterns, rib dysplasia and aetiology of the spinal deformity. *Clinical Anatomy* 1991, 4(1):73.
35. Grivas TB, Burwell RG, Webb JK, Moulton A: The funnel-shaped upper chest of progressive infantile idiopathic scoliosis (IIS): significance for rib growth patterns, rib dysplasia and aetiology of the spinal deformity. In *Proceedings of European Spinal Deformities Society Meeting*. Lyon, France, June 17-19, 1992 Edited by: Kohler R, Picault C. Montpellier, France: Sauramps Medical; 1992:74.
36. Grivas TB, Vasiliadis ES, Polyzois VD, Mouzakis V. Trunk asymmetry and handedness in 8245 school children. *Pediatr Rehabil*. 2006 Jul-Sep;9(3):259-66. doi: 10.1080/10428190500343027. PMID: 17050403
37. Grivas TB, Burwell RG, Purdue M, Webb JK, Moulton A: Segmental patterns of rib-vertebra angles in chest radiographs of children. Changes related to rib level, age, sex, side and significance for scoliosis. *Clinical Anatomy*. 1992; 59(4): 272-288. doi: 10.1002/ca.980050404.
38. Grivas TB, Burwell RG, Purdue M, Webb JK, Moulton A. A segmental analysis of thoracic shape in chest radiographs of children. Changes related to spinal level, age, sex, side and significance for lung growth and scoliosis *J Anat*. 1991 Oct;178:21-38. PMID: 1810928, PMCID: PMC1260532.
39. Perdriolle R, Vidal Jj. (1985). Thoracic Idiopathic Scoliosis Curve Evolution and Prognosis. *Spine*, 10(9), 785-791. PMID: 4089651, doi:10.1097/00007632-198511000-00.
40. Perdriolle R. (1979), La scoliose, son etude tridimensionnelle, Maloine SA Editeur, 27 Ruede 1 Ecole-de-Medicine, 75006 Paris
41. Perdriolle RJ, Vidal J, Bechetti S, Alquier P. Torsion: the essential factor for progression in idiopathic scoliosis. Combined Meeting of Scoliosis Research Society and European Spinal Deformities Society, Amsterdam, 17-22 September 1989.
42. Mehta M. 1972 The rib-vertebra angle in the early diagnosis between resolving and progressive infantile scoliosis. *Bone Joint Surg. [Br.]*, 54:230-243, PMID: 5034823.
43. Xiong B, Sevastik J A, Hedlund R. Sevastik B: Radiographic changes at the coronal plane in early scoliosis *Spine*. 19(2):159-164, 1994. PMID: 8153824, doi: 10.1097/00007632-199401001-00008.
44. Grivas TB, Samelis P, Chadziargiropoulos T, Polyzois B. Study of the rib cage deformity in children with 10 degrees-20 degrees of Cobb angle late onset idiopathic scoliosis, using rib-vertebra angles--aetiologic implications. *Stud Health Technol Inform*. 2002; 91:20-4. PMID: 15457688.
45. Burwell, RG, James NJ, Johnson F, Webb JK, Wilson YG. Standardized trunk asymmetry scores. A study of back contour in healthy schoolchildren. *Journal of Bone and Joint Surgery*, 1983, 65B, 452-463. PMID: 6874719 , DOI: 10.1302/0301-620X.65B4.6874719

46. Merriam WF, Burwell RG, Mulholland RC, Pearson JC, Webb JK. A study revealing a tall pelvis in subjects with low back pain. . J Bone Joint Surg Br. 1983 Mar;65(2):153-6. doi: 10.1302/0301-620X.65B2.6219111. PMID: 6219111
- 47a. Nicolopoulos KS, Burwell RG, Webb JK. Stature and its components in healthy children, sexual dimorphism and age related changes. J Anat. 1985 Aug; 141:105-14. PMID: 4077709.
- 47b. Nicolopoulos KS, Burwell RG, JK Webb Stature and its components in adolescent idiopathic scoliosis. Cephalo-caudal disproportion in the trunk of girls. J Bone Joint Surg Br, 1985 Aug;67(4):594-601. doi: 10.1302/0301-620X.67B4.4030857. PMID: 4030857.
48. Burwell RG, Cole AA, Cook TA, Grivas TB, Kiel AW, Moulton A, Thirlwall AS, Upadhyay SS, Webb JK, Wemyss-Holden SA, Whitwell DJ, Wojcik AS, Wythers DJ. Pathogenesis of idiopathic scoliosis. The Nottingham concept. Acta Orthop Belg. 1992;58 Suppl 1:33-58. PMID: 1456018.
49. Grivas TB, Burwell RG, Purdue M, Webb JK, Moulton A. 1990. The segmental patterns of rib-vertebra angles in chest radiographs of children: significance for idiopathic scoliosis. In Proceedings of the British Association of Clinical Anatomists, 20 December 1990, London.
50. Cole AA, Barson R, Burwell RG, Jacobs KJ, Moulton A, Wallace WA., Webb JK, Wojcik AS 1990. The use of CODA to measure pelvic movements in normal gait: the concept of coupled pelvi-spinal rotation. Clinical Anatomy 3, 65
51. Gregersen GG. and Lucas D B 1967. An in Vivo study of the axial rotation of the human thoracolumbar spine. Journal of Bone and Joint Surgery 49A, 247- 262. PMID: 6018729
52. Sutherland DH, Olshen R, Cooper L, Woo S. 1980. The development of mature gait. Journal of Bone and Joint Surgery 62, 336- 353. PMID: 7364807
53. Γρίβας ΘΒ, Δάγκας Σ, Λαφογιάννη Σ, Σαμέλης Π, Πολυζώης Δ: Το σημείο της διπλής παρυφής των πλευρών των ημιθωρακίων στην πλάγια σπονδυλική ακτινογραφία. Υπάρχει αιτιολογική σχέση με την σκολίωση; 25οΕπετειακό Συμπόσιο Παθήσεων Σπονδυλικής Στήλης «Ν. Γιαννέστρας, Π. Σμυρνής». Πάτρα: Hotel Porto Rio; 1999.
54. Grivas TB, Daggas S, Polyzois B, Samelis P. The Double Rib Contour Sign (DRCS) in lateral spinal radiographs: aetiologic implications for scoliosis. Clermont, France: International Research Society of Spinal Deformities meeting; 2000.
55. Grivas TB, Daggas S, Polyzois BD, Samelis P. The Double Rib Contour Sign (DRCS) in lateral spinal radiographs: aetiologic implications for scoliosis. Stud Health Technol Inform. 2002; 88:38-43. PMID: 15456003
56. Grivas TB. Rib index. Scoliosis, 2014 Nov 20;9(1):20. doi: 10.1186/s13013-014-0020-9. eCollection 2014. PMID: 25635184 PMCID: PMC4310037.
56. Grivas TB. Rib index Scoliosis, 2014 Nov 20;9(1):20. doi: 10.1186/s13013-014-0020-9. eCollection 2014. PMID: 25635184 PMCID: PMC4310037
57. Grivas TB, Vasiliadis ES, Mihas C, Savvidou O. The effect of growth on the correlation between the spinal and rib cage deformity: implications on idiopathic scoliosis pathogenesis. Scoliosis. 2007;2:11. PMID: 17868459 , PMCID: PMC2040132 , DOI: 10.1186/1748-7161-2-11.
58. Grivas TB, Daggas S, Polyzois B, Samelis P. The double rib contour sign in lateral spinal radiographs. Aetiologic implications for scoliosis. Stud Health Technol Inform 88, 2002, 38-43. PMID: 15456003.
59. Grivas TB, Daggas S, Samelis P, Mazioti C, Kandris P. Lateral spinal profile in school-screening referrals with and without late onset idiopathic scoliosis 10°-20°. Stud Health Technol Inform 91 (2002) 25-31, PMID: 15457689.
60. Grivas TB, Vynichakis G, Chandrinou M, Mazioti C, Papagianni D, Mamzeri A, Mihas C. Morphology, Development and Deformation of the Spine in Mild and Moderate Scoliosis: Are Changes in the Spine Primary or Secondary? J. Clin. Med. 2021, 10, 5901. PMID: 34945197, PMCID: PMC8706433, DOI: 10.3390/jcm10245901.
61. Grivas TB , Vasiliadis ES, Rodopoulos G, Bardakos N . The role of the intervertebral disc in correction of scoliotic curves. A theoretical model of idiopathic

- ic scoliosis pathogenesis *Stud Health Technol Inform*, 2008;140:33-6. PMID: 18809995.
62. Grivas TB, Vasiliadis ES, Malakasis M, Mouzakis M, Segos D. Intervertebral disc biomechanics in the pathogenesis of idiopathic scoliosis. *Stud Health Technol Inform* 123 (2006) 80-83. PMID: 17108407.
63. Grivas TB, Stavlas P, Koukos K, Samelis P, Polyzois B. Scoliosis and Cavus Foot. Is there a Relationship? Study in Referrals, with and without Scoliosis, from School Screening. *Stud Health Technol Inform* 88 (2002) 10-14. PMID: 15455996.
64. Grivas TB, Vasiliadis E, Koufopoulos G, Segos D, Triantafyllopoulos G, Mouzakis V, Study of trunk asymmetry in normal children and adolescents. *Scoliosis* 1(1) (2006), 19. PMID: 17137516, PMCID: PMC1693569, DOI: 10.1186/1748-7161-1-19
65. Grivas TB, Vasiliadis ES, Mihas C, Triantafyllopoulos G, Kaspiris A. Trunk asymmetry in juveniles. *Scoliosis*. 2008 Sep 23; 3:13. doi: 10.1186/1748-7161-3-13. PMID: 18811937.
66. Grivas TB, Vasiliadis ES, Mihas C, Mazioti Ch, Triantafyllopoulos G. Back trunk morphology in 3301 children aged 3-9 years old. *Stud Health Technol Inform*, 2008;140:29-32. PMID: 18809994.
67. Grivas TB, Arvaniti A, Mazioti Ch, Manesiotti MM, Fergadi A. Comparison of body weight and height between normal and scoliotic children. *Stud Health Technol Inform*. 2002; 91:47-53. PMID: 15457692.
68. Maragkoudakis EG, Gelalis I, Grivas T, Burwell GR, Mazioti C, Tsilimidos G. Using the Scoliometer and a Surface Topography Apparatus to Check if Back Trunk Asymmetry Changes in Children and Adolescents in the Forward Flexion and Standing Erect Positions. *Cureus*. 2019 Dec 10;11(12): e6334. doi: 10.7759/cureus.6334. PMID: 31938623.
69. Grivas TB, Angouris K, Chandrinou M, Kechagias V, Truncal changes in children with mild limb length inequality: a surface topography study *Scoliosis Spinal Disord*. 2018 Dec 18; 13:27. doi: 10.1186/s13013-018-0173-z. eCollection 2018. PMID: 30599038, PMCID: PMC6299581.
70. Grivas TB, Burwell RG, Mihas C, Vasiliadis ES, Triantafyllopoulos G, Kaspiris A. Relatively lower body mass index is associated with an excess of severe truncal asymmetry in healthy adolescents: Do white adipose tissue, leptin, hypothalamus and sympathetic nervous system influence truncal growth asymmetry? *Scoliosis*, 2009 Jun 30;4:13, doi: 10.1186/1748-7161-4-13., PMID:19566930.
71. Grivas TB, Mihas C, Mazioti Ch, Sakellaropoulou S, Burwell RG (2013): Parental Age at birth and truncal back shape asymmetry in school children: Implications for an epigenetic mechanism? 50th Anniversary Zorab Symposium, Royal College of Surgeons, London, UK, 20 – 21 June, 2013.
72. Grivas TB, Mihas C, Mazioti C, Sakellaropoulou S, Zisis N, Akriotis A, Burwell RG (2012): Truncal asymmetry in school children: The effect of the parental age at birth. 9th International Conference on Conservative Management of Spinal Deformities and 7th SOSORT Meeting, Milan (Italy) 10-12 May 2012, Milan (Italy) 8-9 May 2012. http://sosort2012.org/index.php?option=com_content&view=featured&Itemid=101
73. Grivas TB, Mihas C, Mazioti C, Sakellaropoulou S, Zisis N, Akriotis N, Burwell RG (2012): Parental Age at Birth Evaluated in Relation to Truncal Back Shape Asymmetry in a Large Sample of Schoolchildren: an Epigenetic Mechanism? E-Poster No: 588. 19th International Meeting on Advanced Spine Techniques (IMAST), Istanbul, Turkey, July 18-21, 2012
74. Grivas TB, Mihas C, Mazioti C, Sakellaropoulou S, Zisis N, Akriotis A, Burwell RG. *Scoliosis*. 2013, Jun 3;8 Suppl 1(Suppl 1):O1-O20. doi: 10.1186/1748-7161-8-s1-o1. PMID: 23767789, 9th International Conference on Conservative Management of Spinal Deformities - SOSORT 2012 Annual Meeting Milan, Italy. 10-12 May 2012.
75. Heijmans BT, Tobi EW, Lumey LH, Slagboom PE. The epigenome: archive of the prenatal environment. *Epigenetics* 2009, 4(8):526-31. PMID: 19923908
76. Hochberg Z, Feil R, Constancia M, Fraga M, Junien C, Carel JC, Boileau P, Le Bouc Y, Deal CL, Lillycrop K, Scharfmann R, Sheppard A, Skinner M, Szyf M, Waterland RA, Waxman DJ, Whitelaw E, Ong K, Albertsson-Wikland K: Child health, devel-

- opmental plasticity, and epigenetic programming. *Endocr Rev* 32(2) (2011), 159-224. PMID: 20971919, doi: 10.1210/er.2009-0039. Epub 2010 Oct 22.
77. Burwell RG, Dangerfield PH, Moulton A and Grivas TB: Adolescent idiopathic scoliosis (AIS), environment, exposome and epigenetics: A molecular perspective of postnatal normal spinal growth and the etiopathogenesis of AIS with consideration of a network approach and possible implications for medical therapy. *Scoliosis* 6 (20 11), 26 (2 December 2011). PMID: 22136338, PMCID: PMC3293085 , DOI: 10.1186/1748-7161-6-26
78. De George FV, Fisher RL: Idiopathic scoliosis: genetic and environmental aspects. *J Med Genet*, 1967 Dec;4(4):251-157. doi: 10.1136/jmg.4.4.251
79. James JIP, Wynne-Davies R: Genetic factors in Orthopaedics, Chapter I. In *Recent Advances in Orthopaedics*, Edited by AGApley, London; J & A Churchill Ltd, (1969) 1-35.
80. Ryan MD, Nachemson A. Thoracic adolescent idiopathic scoliosis: perinatal and environmental aspects in a Swedish population and their relationship to curve severity. *J Pediatr Orthop*. 1987 Jan-Feb;7(1):72-7. PMID: 3793915.
81. Grivas TB, Mihas C, Mazioti Ch, Zisis N, Sakellariopoulou S, Akriotis A, Burwell RG. Maternal age at birth: does it dictate the epigenotypic expression of the truncal asymmetry of a child? *Stud Health Technol Inform*, 2012;176:36-42. PMID: 22744453.
82. Cheng JC, Castelein RM, Chu WC, Danielsson AJ, Dobbs MB, Grivas TB, Gurnett CA, Luk KD, Moreau A, Newton PO, Stokes IA, Weinstein SL, Burwell RG. Adolescent idiopathic scoliosis. *Nat Rev Dis Primers*. 2015 Sep 24; 1:15030. doi: 10.1038/nrdp.2015.30. PMID: 27188385.
83. Grivas TB. Survey on the lower limbs of early school age children. MD Thesis, University of Athens, Greece, 1984.